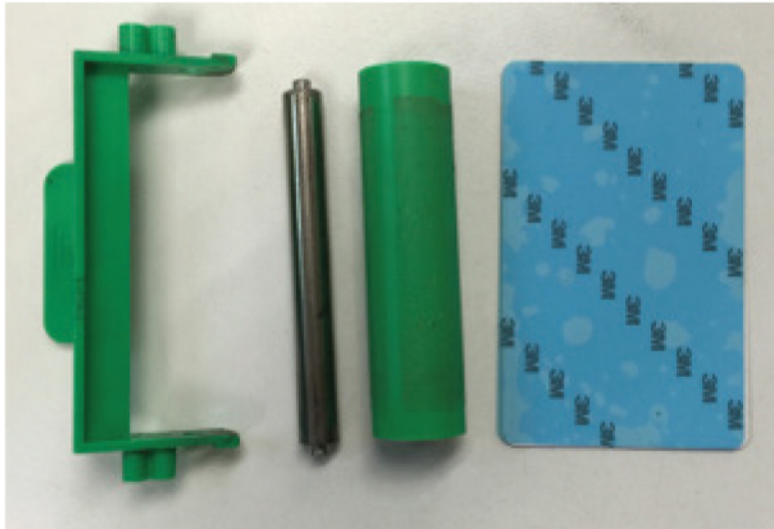


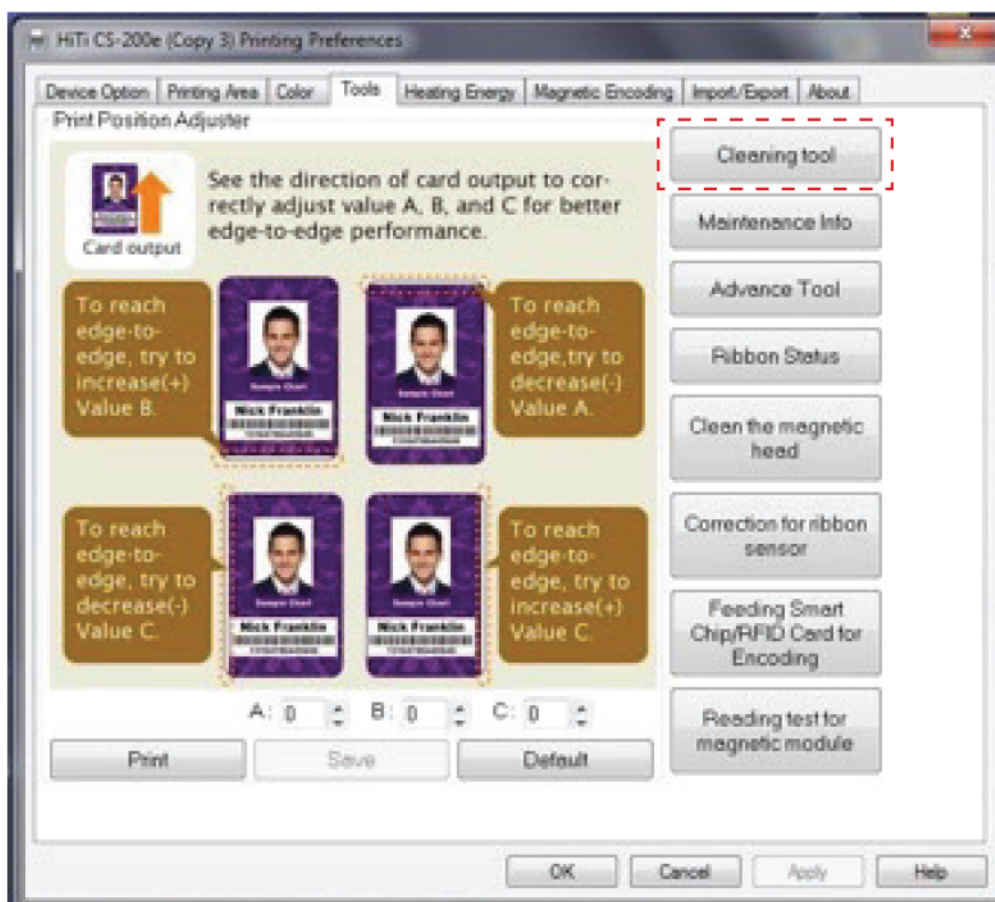
Cleaning Kit



- Replace the green roller everytime a new set of ribbon is used.
- Use the cleaning card that is included in the new ribbon.

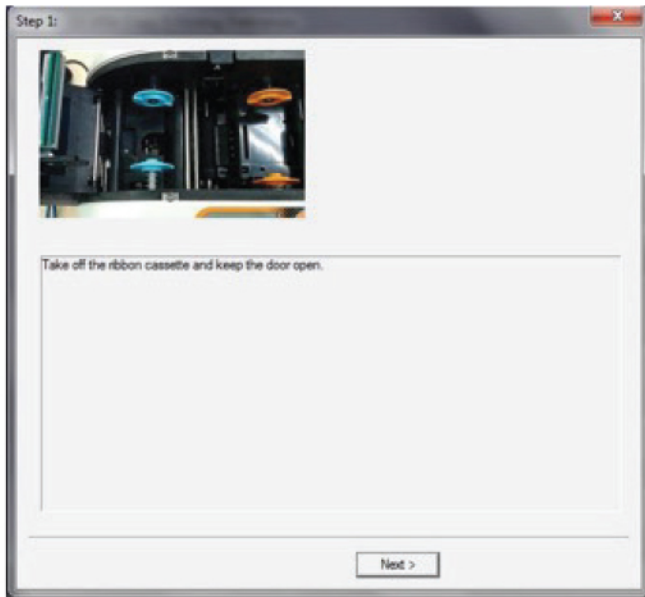
Cleaning Process Guides as below :

1. Go to "Control Panel" > Printers and Faxes/Printers and Devices > Select Hiti CS-200e Printer > right click > select "Printing Preferences".
 - Under Tools > Select "Cleaning Tool" for general printer cleaning process by using cleaning card (blue).

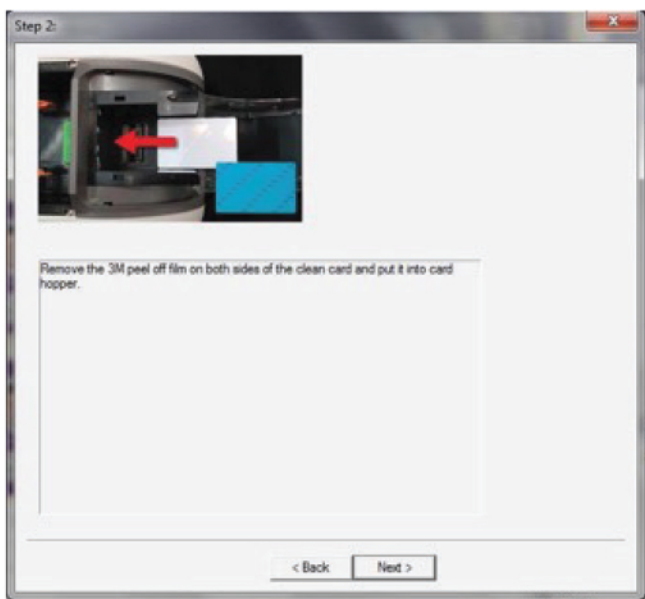


Cleaning Process Step 1 :

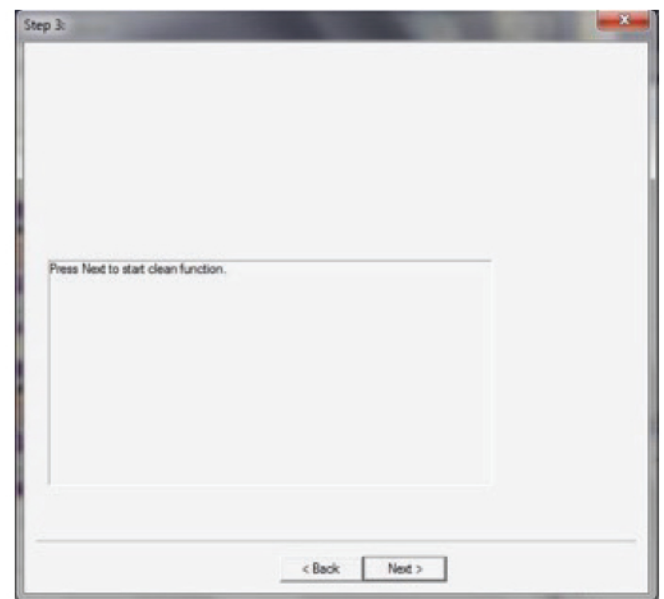
Follow instruction given alternatives, you may pull up the ribbon cassette and keep the door open instead of take off the ribbon cassette.



Cleaning Process Step 2 :



Cleaning Process Step 3 :



* Click "Next" to start cleaning, cleaning process takes about 10 sec duration.

Remarks :

- Do not re-use the cleaning card.